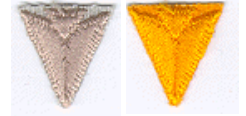




Bear Achievement #5: SHARING YOUR WORLD WITH WILDLIFE

Reference: <http://usscouts.org/usscouts/advance/cubscout/wolfarrows.asp#BIRDS>



This elective is also part of the Cub Scout World Conservation Award.

Discovery Room (See Visitor Map)

➤ Name one animal that has become extinct in the last 100 years. Tell why animals become extinct.

Extinction is the end of existence of a species or group. The moment of extinction is generally considered to be the death of the last individual of that species.

1. What extinct bird laid the largest egg on display in the Discovery Room? (circle one)

- a. The Secretary Bird b. The Elephant Bird c. The Dodo Bird

2. What large bird of prey was “down listed” in many states from *endangered* to *threatened* in 2007?

- a. Bald Eagle b. California Condor c. Aplomado Falcon

3. Ask your tour leader for information about the Passenger Pigeon that became extinct in the last 100 years.

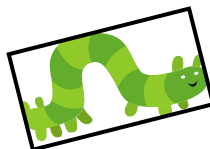
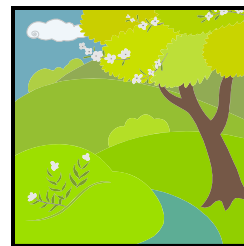
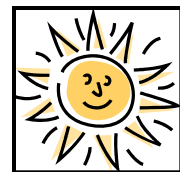
- Why did this happen? a. Disease b. Lack of food c. Over hunting d. Loss of nesting places

Conservation Room (See Visitor Map)

4. Draw a line from the Peregrine Falcon to its prey.

5. Draw lines to create a “food chain” using the rest of the pictures (in black boxes).

6. How were DDT and broken eggs involved in this food chain? Tell your leader.



Conservation Room (See Visitor Map)

➤ **Name one animal that is on the endangered species list.**

- a. Turkey Vulture b. Bald Eagle c. California Condor d. Aplomado falcon

➤ **Build or make a bird feeder or birdhouse and hang it in a place where birds can visit safely.**

-Ask your tour person for the plans on building a simple bird feeder or birdhouse

1. Find the pair of birds of prey on display that are nesting in a box. They are: (Circle One)

- a. Red-tailed Hawks b. American Kestrels c. Prairie Falcons

2. Are the male and female the same color? Yes No (Circle One)

3. Are the male and female on the box the same size? Yes No (Circle one)



Biology/ Ecology Room (See Visitor Map)

➤ **Choose a bird or animal that you like and find out how it lives.**

➤ **Make a poster showing what you have learned.**

**** Using the touch screens, select a bird of prey and note 5 important facts in the box below.**

**** Make a sketch of your bird.**

Name of Bird
1.
2.
3.
4.
5.

Sketch your bird

➤ **Explain what a wildlife conservation officer does.**

-Ask your leader, parent or tour leader.

A wildlife conservation officer protects, preserves, manages, or restores natural environments and the ecological communities that inhabit them.

A conservation officer would tell you that it is illegal to have any part of a bird of prey- a feather, beak or talon.

➤ **Visit one of the following: Zoo, Nature center, Aviary, Wildlife refuge, Game preserve.**

You visited The Peregrine Fund's World Center for Birds of Prey